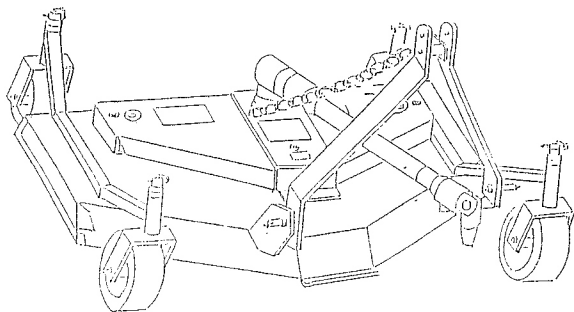


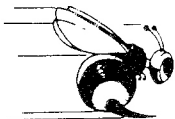
BIG BEE Finishing Mower



Owner's Manual and Parts Book

BB FM48	48"
BB FM60	60"
BB FM72	72"
BB FM84	84"

BIG



BEE

FEATURES:

- Cutting Width-48", 60", & 72"
- Number of Blades-3
- Single Belt-Industrial Type
- Gear Box-40 HP, 1:1, 92 Increaser
- Gauge Wheels- Four Adjustable- 360 Swivel Mounted (Front & Rear)
- Easy Access Hinged Service & Maintenance Shield Bolted Deck Sides
- Spindles-Three- Mounted in Greaseable Roller Bearings
- PTO Shaft Series 4-32" Long
- Cutting Height- 2-2 1/2"

GENERAL MAINTENANCE

1. Check oil level in gear box periodically. Keep level up to check plug level. Use EP 90 or EP 140 transmissions oil . Use Caution not to over fill.
2. Lubricate at all grease zerks every few hours of use.
3. Keep PTO Shaft free of dirt and foreign materials so that it will telescope freely to avoid damage to your tractor or mower. Keep all shields on PTO.
4. Keep good blades on mower. When replacing worn blades be sure to replace in sets to maintain rotary balance.
5. Blade bolts on this finishing mower are left hand bolts.
6. Keep all bolts tightened properly.

